

**INNOVATIONS IN POWER DELIVERY**



## **SAFE**

20X More Electrical Contact  
Highest Quality Construction  
CE | CSA | ETL Certified

## **SIMPLE**

Fits Industry Standard Hole Pattern  
Asymmetrical Design - Easy to Use  
Installation is Quick & Easy

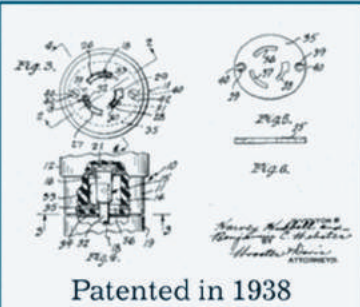
## **SECURE**

Sleeved Design - Supports Connection  
Automatic Locking Side Levers  
No Screw On Lock Rings

THE WORLD IS READY FOR A SOLUTION...



SMARTPLUG® IS THE NEW INDUSTRY STANDARD



Patented in 1938

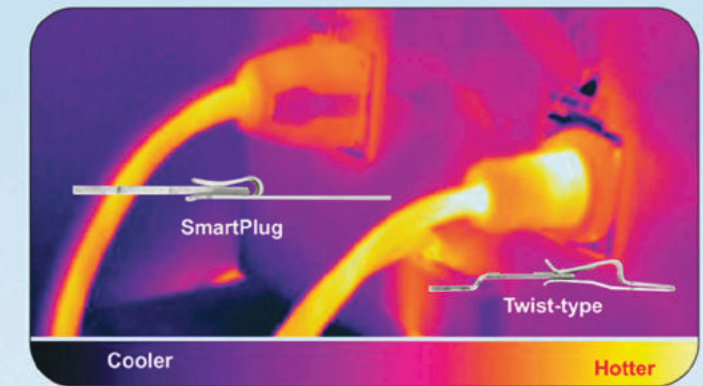
**DID YOU KNOW**

Shore power delivery systems have remained virtually unchanged since they first came out in 1938?



**SAFE Eliminates Overheating**

- ⚡ 20x more electrical contact than the old twist type connector
- ⚡ Multi-point locking system
- ⚡ Solid sleeve connection
- ⚡ Triple weatherproof seals



**TWIST-TYPE DESIGN PROBLEMS**

- ☹ Curved electrical pins means minimal electrical contact
- ☹ Visible gap between body of plug and inlet housing allows for movement of plug within the inlet
- ☹ Nonexistent weatherproofing
- ☹ Difficult to orient in low light or hard to reach scenarios

**IT'S TIME for a CHANGE!**



**SIMPLE Easy to Use**

- ⚡ No L-shaped pins – easy to use at night
- ⚡ Plugs straight in – no twisting required
- ⚡ No misalignment issues
- ⚡ No cross threading problems
- ⚡ LED power indicator light – molded cordsets

**PROBLEM SOLVED**



“It’s easy to use. We feel safer having a much better product on board for such a critical connection. The design is fantastic. Well done, SmartPlug... You get ★★★★★ from us!”

KAREN & JEFFREY SIEGEL - MV Red Head | Developers of ActiveCaptain

**SECURE How it Works**



Push connector straight in. No twisting required!

Stainless side levers automatically lock into inlet.

Stainless cover snaps down onto connector body.

EASY TO RETROFIT | STANDARD INLET HOLE PATTERN

DOESN'T YOUR BOAT DESERVE THE BEST PROTECTION?

Office: 206.285.2990 | Fax 206.285.2981

www.SmartPlug.com | sales@smartplug.com

## INTERNATIONAL - 16A & 32A / 230V

### 16A & 32A - 230V / MALE INLET CONNECTORS - BOAT SIDE

Amps	Stainless	Non-Metallic White	Non-Metallic Gray	Non-Metallic Black
16	BM16NT	BM16PW	BM16PG	BM16PB
32	BM32S	BM32PW	BM32PG	BM32PB

### 16A & 32A - 230V / FEMALE RETRO FIT CONNECTORS

Amps	Part Number	Amps	Part Number
16	BF16	32	BF32

### 16A & 32A - 230V / COMBO KITS - CONNECTORS & INLETS

Amps	Stainless	Non-Metallic White	Non-Metallic Gray	Non-Metallic Black
16	B16ASSYNT	B16ASSYPW	B16ASSYPG	B16ASSYPB
32	B32ASSY	B32ASSYPW	B32ASSYPG	B32ASSYPB

## NORTH AMERICA - 30A & 50A 125/250V

### 30A & 50A - 125/250V / MALE INLET CONNECTORS - BOAT SIDE

Amps	Stainless	Non-Metallic White	Non-Metallic Gray	Non-Metallic Black
30	BM30NT	BM30PW	BM30PG	BM30PB
50	BM50S	BM50PW	BM50PG	BM50PB

### 30A & 50A - 125/250V / FEMALE RETRO FIT CONNECTORS

Amps	Part Number	Amps	Part Number
30	BF30	50	BF50

### 30A & 50A - 125/250V / COMBO KITS - CONNECTORS & INLETS

Amps	Stainless	Non-Metallic White	Non-Metallic Gray	Non-Metallic Black
30	B30ASSYNT	B30ASSYPW	B30ASSYPG	B30ASSYPB
50	B50ASSY	B50ASSYPW	B50ASSYPG	B50ASSYPB

## ACCESSORIES

Part Number	Description	Part Number	Description	Part Number	Description
A1001	Weathercap	BDCOAX	TV/Internet	CB001	Cord Bag

