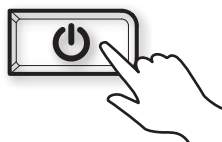


QUICK START GUIDE

Power On/Off

Power On/Off: Press the POWER key.

Power Off: During operation, press the POWER key, select Power Off, and then select Continue.



OR

Press and hold the POWER key.

First Time Setup

When you power on the fish finder for the first time, use the Setup Guide to configure the unit. These settings can be adjusted from the Home screen later.

1. Tap each section to configure your unit.
2. Select Continue.

Setup Screen

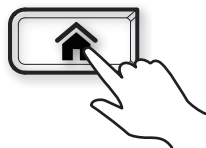


NOTE

For additional information, download the XPLORE Operations Manual from our Web site at humminbird.johnsonoutdoors.com.

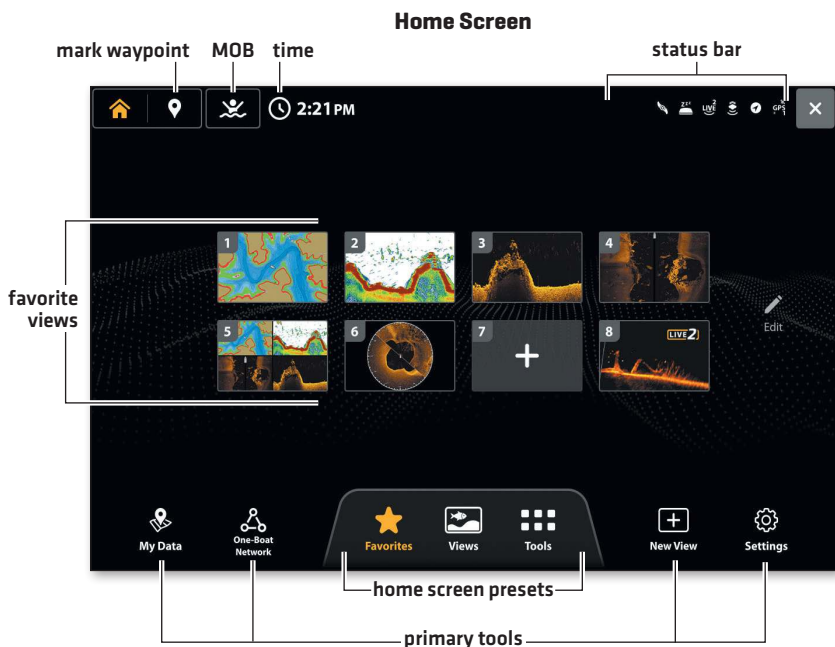
The Home Screen


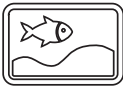

The Home screen is the main control center for your fish finder. Use the Home screen to access views, favorites, settings, navigation data, One-Boat Network connections, and other tools.









Press the HOME key to open the Home screen from any view.

- Tools and views available on the Home screen are determined by the equipment attached to the Humminbird network.



Icon	Name	Function
	Favorites	Select Favorites to quickly access your favorite saved views.
	Views	Select Views to access the complete set of views available on your fish finder. You can edit views, create your own views, and save your favorite views.
	Tools	Tools allow you to manage the fish finder network operations and saved data. When you connect an accessory to the fish finder, a related tool may also be displayed.

Icon	Name	Function
	My Data	<p>Select My Data to manage your saved waypoints, spot-locks, routes, tracks, and itracks. You can create new navigation data from this screen or edit your saved navigation data.</p>
	One-Boat Network	<p>Select One-Boat Network to pair your fish finder to the One-Boat App on your phone. You can also pair your wireless remote, trolling motor, shallow water anchor and downrigger (separate purchase required) to the fish finder. See your installation guide for details.</p> <p>Required Equipment: mobile phone (with Bluetooth)</p>
	New View	<p>Select New View to create a new view from a blank template. You can change the type of data displayed in a view and how many panes are displayed.</p>
	Settings	<p>Select Settings to change general system settings such as the units of measurement and the time and date format. You can also use this menu to view system, network, and NMEA 2000 information.</p>
	Mark	<p>Select Mark to add a waypoint.</p>
	MOB	<p>Select the MOB icon to start Man Overboard functions.</p>

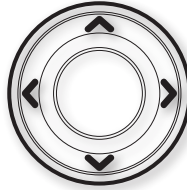
▶ Select a Tool, Widget, View, or Main Menu

Use the touch screen, CURSOR pad, or the ENTER key to make selections.

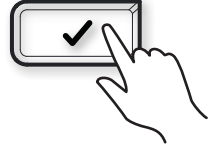


Tap to Select

OR



Select



Open

▶ Adjust a Menu Setting

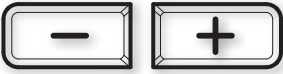
Drag the slider.



Tap the +/- buttons.



Press the +/- ZOOM keys.



▶ Close a Menu

↶ Tap the Back icon to go back one level.

✕ Tap the X icon to close a menu.

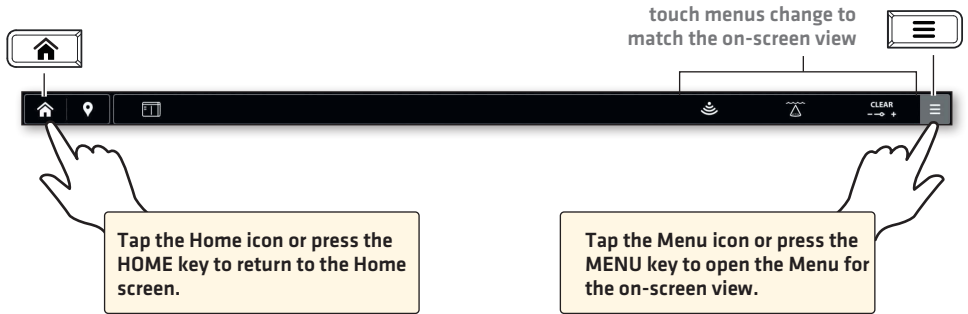


Press the EXIT key to close a menu or go back one level. Press and hold the EXIT key to close all menus and return to the last view.



▶ Tips for Using the Top Bar

The Top Bar is located at the top of the screen. The Top Bar changes to match the on-screen view.

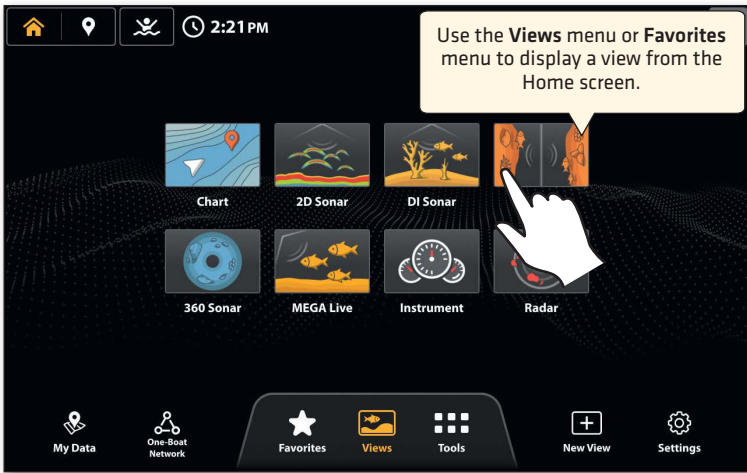


Common Top bar functions include:

General	
	Open the X-Press menu.
	Maximize [or minimize] pane in a multi-pane view.
	Open the View Options menu.
	Open the Go To menu and start navigation.
Sonar Views	
455 kHz	Change the frequency. Available frequencies are dependent on the installed transducer.
	Change the spectrum between narrow, full and wide in 2D sonar.
CLEAR 	Change between Clear Mode and Max Mode in 2D sonar.
	Change between both beams, left beam or right beam in Side Imaging View.
Chart View	
	Change between Fishing, Navigation, and User presets.
	Open Layers menu [VX chart card required].
	Open Depth Highlight menu.
	Access My Data tool.

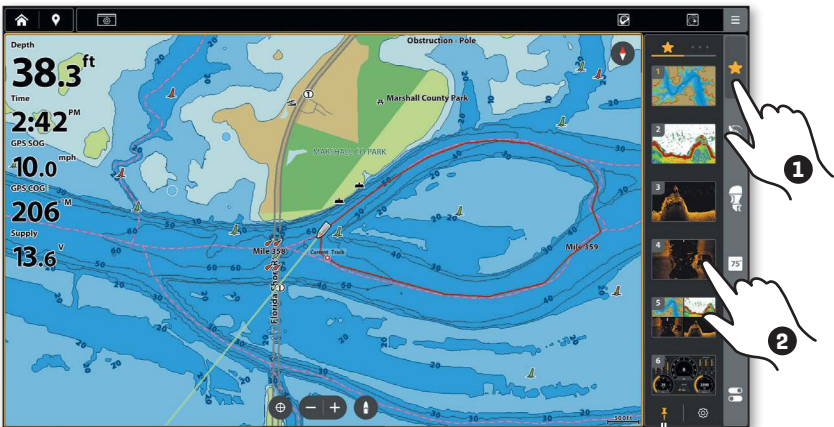
Display a View from the Home Screen

Use the touch screen to open a view from the Views menu or the Favorites menu.



Display a View from the Favorite Views Widget

1. With a view displayed on-screen, tap the Favorite Views widget in the Side Bar.
2. Tap a favorited view.



tap to hide the side bar

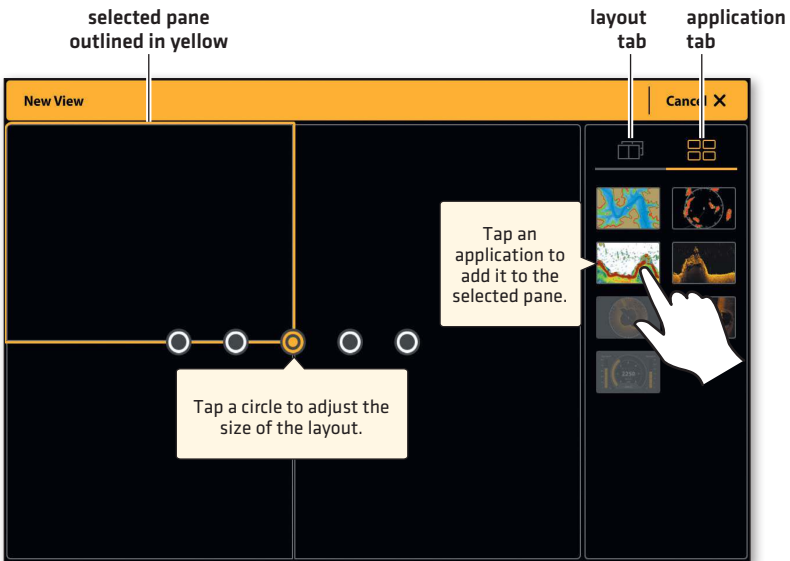
NOTE

The Favorite Views on the Home screen are the same as the Favorite Views in the Side Bar.

Create a New View

Use the New View tool to create your own custom view.

1. Press the HOME key.
2. Select New View.
3. Select a Pane Layout from the Layout tab.
4. Tap a circle to adjust the pane size.
5. Tap a pane to highlight it, and select an application from the Application tab.
6. Repeat for each pane.
7. Tap Save.



Edit the Favorite Views

Favorite Views can be added (total number of Favorite Views is dependent on the fish finder model) or changed at any time.

Add a New Favorite View

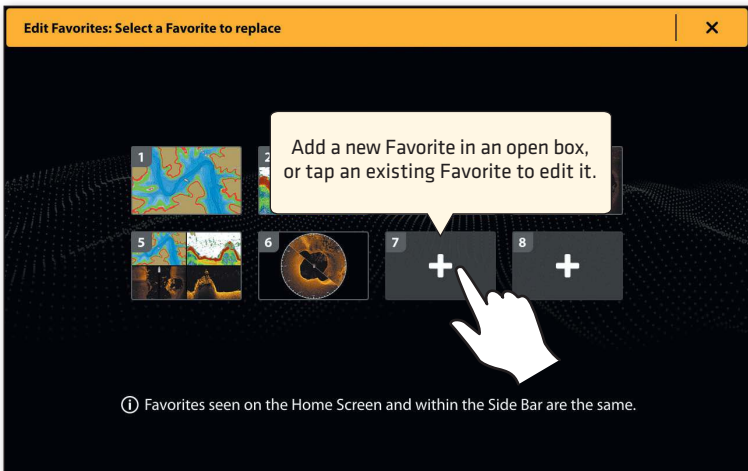
1. From the Favorite Views Home screen or Side Bar, tap an open view box.
2. Tap a View Group.
3. Tap a View to display.

The Home screen and Side Bar will both be updated.

Edit a Favorite View

1. From the Favorite Views Home screen, tap Edit.
2. Select a View to replace.
3. Tap a View Group.
4. Tap a new View to display.

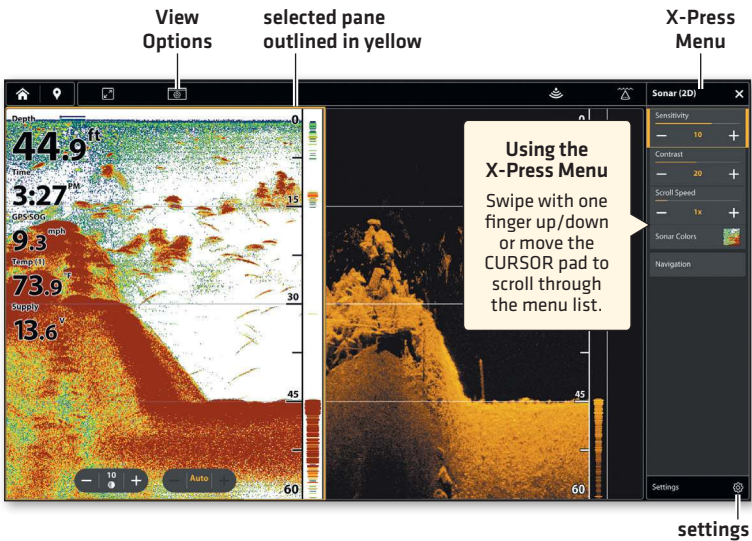
The Home screen and Side Bar will both be updated.



Edit the On-Screen View (X-Press Menu)

The X-Press Menu displays menu options for the on-screen view and the selected pane.

1. **Single-Pane View:** Tap the Menu icon in the Top bar, or press the MENU key.
Multi-Pane View: Tap a pane. Tap the Menu icon in the Top bar, or press the MENU key.
2. Select an option in the X-Press menu to change the appearance of the view.
Select **Settings > Overlays** to display or hide information on the view.
Select **View Options > Data Overlays** to display data readouts on the view.



Tap to Select a Pane
and the Menu

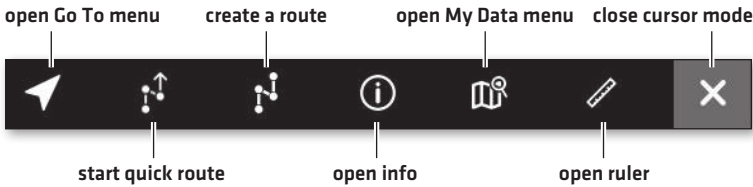
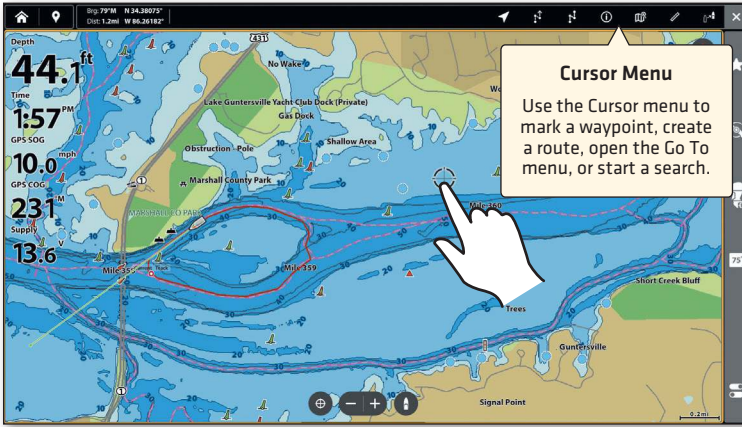
OR



Press the MENU key

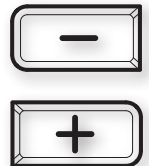
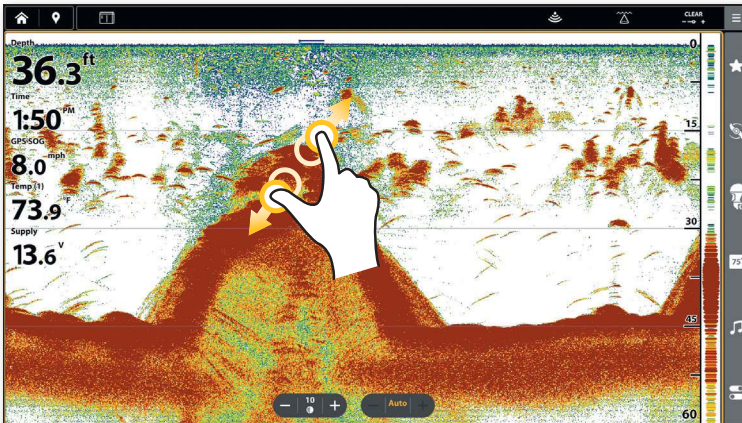
Activate the Cursor

Tap a position on the view, or move the CURSOR pad, to activate the Cursor. When the Cursor is active, the Cursor menu will display in the Top bar.



Zoom In/Zoom Out

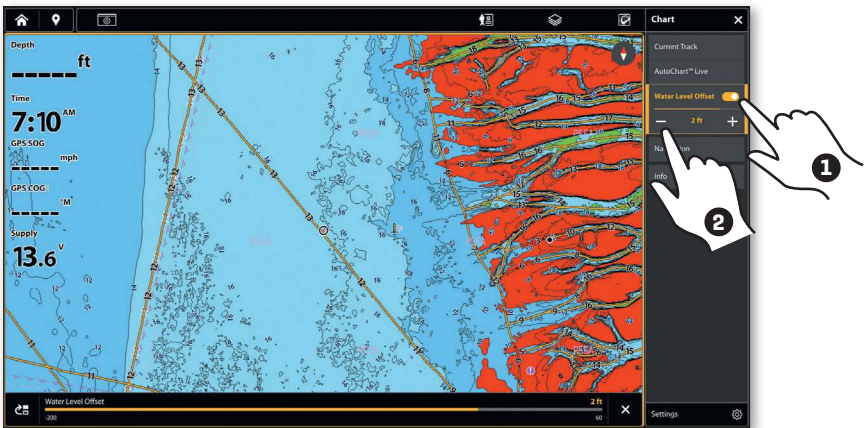
Pinch out to zoom in, pinch in to zoom out, or press the +/- ZOOM keys.



Set Up Humminbird® Charts: Set the Water Level Offset

When you start your trip for the day using a Humminbird CoastMaster™ or LakeMaster® VX chart card, it is important to note if the water level is higher or lower than usual. For example, if the digital depth on your fish finder is showing 3 feet less than the related depth contour for your location, set Water Level Offset to -3 feet.

1. With a Chart View displayed on-screen, tap the Menu icon in the Top bar, or press the MENU key once.
2. Select Water Level Offset.
3. Tap the on/off button, or press the ENTER key, to turn it on.
4. Tap the +/- buttons, press and hold the slider, or press the +/- ZOOM keys to adjust the setting.



NOTE

A Humminbird CoastMaster or LakeMaster chart card must be installed and selected as the chart source to enable this feature.

To apply depth colors, depth highlight range, etc., tap the Depth Highlight icon in the Top bar. See your operations manual for details.

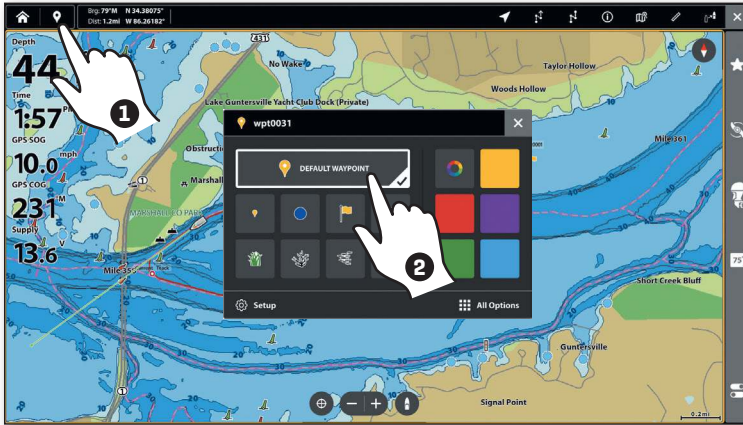
Mark Waypoints

Waypoints can be marked from any view.

1. Tap the Mark button on the Top Bar or press the MARK key.

If the cursor is not active, the waypoint will be marked at the boat position. If the cursor is active, the waypoint will be marked at the cursor position.

2. Select a waypoint icon and color from the Waypoint dialog box.



Pair the Fish Finder to the One-Boat App

Use the following instructions to pair the fish finder to the One-Boat Network App on your phone using Bluetooth wireless technology. [Available with Bluetooth supported Humminbird products and mobile devices only. Wifi or data connection required.]

Enable Bluetooth on the Phone

1. Open the Settings menu on your phone.
2. Select Bluetooth.
3. Select On.

Pair the Fish Finder

1. Press the HOME key.
2. Select One-Boat Network.
3. Under Phone Setup, select Connect Phone.
4. Follow the on-screen prompts to complete the pairing process.
5. Check the Bluetooth menu on your phone. Tap the name of the fish finder on your phone.
6. Confirm the six digit confirmation code and tap Pair on your phone.

Upon successful pairing, the fish finder will be listed as connected under the phone's Bluetooth menu.

Managing your Humminbird Unit

▶ Register your Humminbird

Register your product[s] and sign up to receive the latest Humminbird news, including software updates and new product announcements.

1. Go to our Web site at humminbird.johnsonoutdoors.com, and click Support > Register Your Product. Follow the on-screen instructions to register your Humminbird product.













▶ Download the Operations Manual

1. Go to our Web site at humminbird.johnsonoutdoors.com, and click Support > Manuals.
2. Under XPLORE Series, select XPLORE Series Product Manual.

▶ Update Software

It is important to keep your fish finder and accessory software up to date. You can update software using a microSD card or by using **Bluetooth** wireless technology and our One-Boat Network App®. See your operations manual for complete details about updating software.

- **To check your current software version**, press the HOME key and select Settings > Network > System Info.
- **To update software with a microSD card**, you will need a formatted microSD card with an adapter. Visit our Web site at humminbird.johnsonoutdoors.com and click Support > Software Updates. Select the software update for your XPLORE model and follow the on-screen instructions to save the software file to the card. Then, power on the fish finder and install the microSD card in the card slot. Follow the on-screen prompts to confirm the software update.
- **To update software with the One-Boat Network**, visit our Web site at humminbird.johnsonoutdoors.com and click Learn > One-Boat Network App. Use the One-Boat Network App to download and push software updates directly to your Humminbird fish finder or accessory. [Available with Bluetooth supported Humminbird products and mobile devices only. Wifi or data connection required.]

Key	Key Functions
	Press the POWER key to power on the fish finder. During operation, press the power key to open the Power X-Press Menu. Press and hold the power key to power off the fish finder.
	Press the ENTER key to start a command or turn on a setting. The ENTER key also opens the Info menu and the Cursor menu.
	Press the EXIT key once to close a menu, close a dialog box, turn off an alarm, or exit Cursor mode. Press and hold the EXIT key to close all menus at once.
	Press the CURSOR PAD to select a view, tool, or menu. The Arrow keys can also be used to move the cursor across the view and pan 2D/3D chart views.
	Press the GO TO key to open the Go To menu for navigation functions.
	Press the Screen Snapshot key to save the screen image.
	Press the MARK key to mark waypoints. If the cursor is not active, the waypoint will be marked at the boat position. If the cursor is active, the waypoint will be marked at the cursor position.
	Press the HOME key to display the Home screen. The Home screen allows you to access settings, alarms, views, and tools for the fish finder.
 	For a closer view, press the ZOOM IN [+] key. For a wider view, press the ZOOM OUT [-] key. Press and hold the ZOOM OUT [-] key to zoom out all the way. Press to adjust menu settings.
	Press the MENU key once to open the X-Press Menu for the on-screen view and operation mode. To open the Settings tool, press and hold the MENU key.
	Press an OBN key to enable One-Boat Network functions. These keys are programmable from the One-Boat Network tool.

Contact Humminbird

Contact Humminbird Technical Support through our Help Center at <https://humminbird-help.johnsonoutdoors.com/hc/en-us> or by writing to the address below:

Humminbird Service Department
678 Humminbird Lane
Eufaula AL 36027 USA

Social Media Resources:



Facebook.com/HumminbirdElectronics



Twitter.com [@humminbirdfish]



Instagram.com/humminbirdfishing



YouTube.com/humminbirdtv

